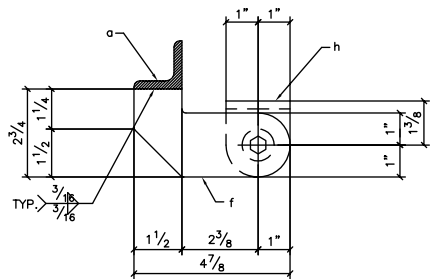


ONE - SAFETY GATE - 888 - 114A
 (3 - 3/8" M.B x 1 1/2")



SECT. A

MATERIAL LIST

SHIPPING MARK	NO. REQ'D	DETAIL MARK	SIZE	LENGTH	REMARKS
114A	ONE		SAFETY GATE		
	2	a	L 1 1/2 x 1 1/2 x 1/4	2 5/4	B.C.2.E 13
	2	b	L 1 1/2 x 1 1/2 x 1/4	1 7/4	B.C.2.E 8
	1	c	F.B 4 x 1/4	1 4	5
	1	d	F.B 2 1/2 x 1/4	0 3/4	1
	2	f	F 1/2 x 2 1/4	0 4/4	1
	2	g	F.B 2 x 3/8	0 2	1
	1	h	F.B 2 x 1/4	2 7/8	BEND 4
	1	k	9" DOOR SPRING (BOMMER SPRING HINGE CO. TYPE 2400 ZINC PLATED) OR EQUAL		
	2		1/2" M.B	0 2	A307 1
	4		1/2" JAMB NUT		A307 1
	2		1/2" FLAT WASH		A307 1
	1		1/4" RO.HD.	0 1	A307 1
			M.BOLT		

(GALV.) FIELD BOLTS (+10%)

4	3/8" M.B	0	1 1/2	A307	1
---	----------	---	-------	------	---

ALL MATERIAL : A36

SHOP PRICE GALV. TOTAL WEIGHT 38

BOLTS NOTED HOLES NOTED UNLESS OTHERWISE NOTED
 NOTE: END AND EDGE DISTANCE IS UNLESS OTHERWISE NOTED

REVISIONS

NO.	DESCRIPTION	DATE	APP'D.

ENER-TECH METALS INC.
 7815 SOMERSET BLVD., P.O. BOX 137, PARAMOUNT, CA 90723-5050
 PHONE (562) 630-6804 FAX (562) 634-0892

CUSTOMER: ARCO PRODUCTS COMPANY
 BUILDING: SULFUR COMPLEX REVAMP PROJECT
 LOCATION: PIPE RACK/RW-6690 STRUCTURE

SAFETY GATE

- SHOP NOTES:
- PRECEDUE SHIPPING MARK IN BILL OF MATERIAL WITH 888
 - ALL HOLES TO BE CLEAN AND FREE FROM BURRS.
 - CLIP CORNERS OF PLATES 3/4X3/4
 - SEAL W/SPACER

CUST. DRG. NO.	888-114A	DATE	10-98	JOB NO.	888	SHEET NO.	114
ERECTOR	DOV.	DATE	10-98	DATE			

PDA Consulting
CONFIDENTIAL